

GCSE
PSYCHOLOGY
(8182)



Ace your Psychology GCSE !

eglossop@latimer.org.uk

Mrs E Glossop
Progress Leader Social Studies

Honesty ~ Excellence ~ Ambition ~ Respect ~ Teamwork

Paper 1: Cognition and behaviour

What's assessed

- Memory
- Perception
- Development
- Research methods

Students will be expected to draw on knowledge and understanding of the entire course of study to show a deeper understanding of these topics.

How it's assessed

- Written exam: 1 hour 45 minutes
- 100 marks
- 50% of GCSE

Paper 2: Social context and behaviour

What's assessed

- Social influence
- Language, thought and communication
- Brain and neuropsychology
- Psychological problems

Students will be expected to draw on knowledge and understanding of the entire course of study to show a deeper understanding of these topics.

How it's assessed

- Written exam: 1 hour 45 minutes
- 100 marks
- 50% of GCSE

Paper 1

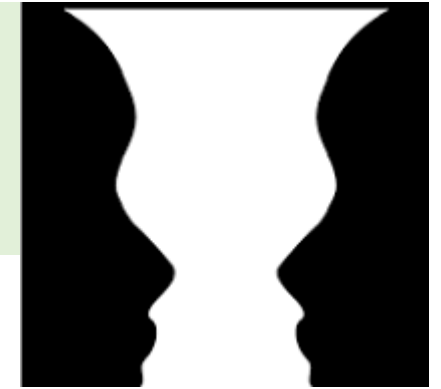
Memory – Completed in y9

- Processes involved in memory
- Structure of memory
- Memory as an active process, reconstructive memory



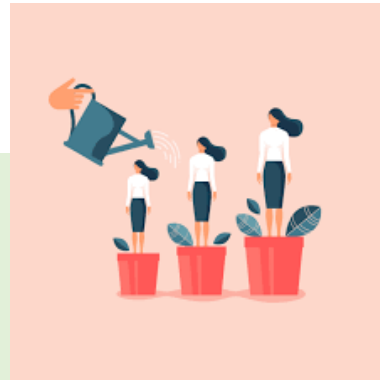
Perception

- Sensation and perception
- Visual cues
- Optical illusions



Development –

- Early brain development
- Piaget's theory and education
- The effects of learning on development



Research methods – Completed in Y9

- Designing research
- Correlations
- Data Handling
- Ethical considerations



Honesty ~ **Excellence** ~ **Ambition** ~ **Respect** ~ **Teamwork**

Paper 2

Social Influence

- Conformity
- Obedience
- Prosocial Behaviour
- Crowd behaviour



Brain and Neuropsychology

- Structure and function of the nervous system
- Structure and function of the brain
- Introduction to neuropsychology



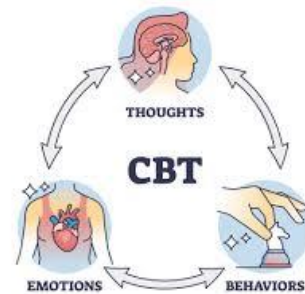
Language Thought and Communication

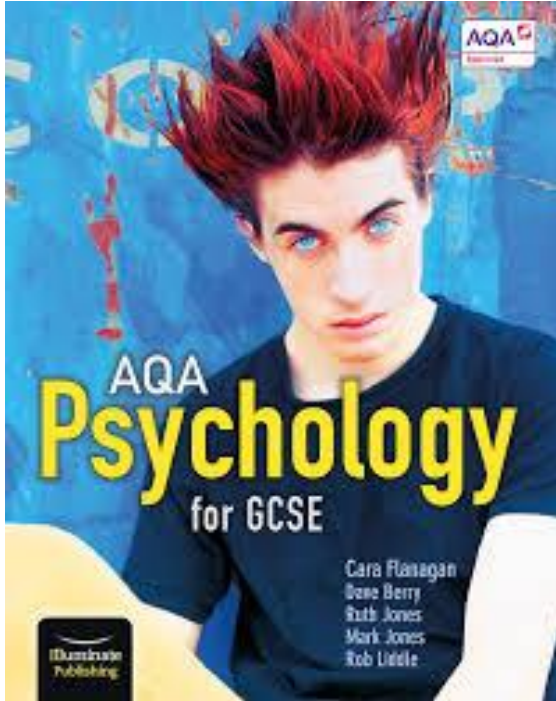
- Language, thought and our view on the world
- Human and animal communication
- Non verbal communication



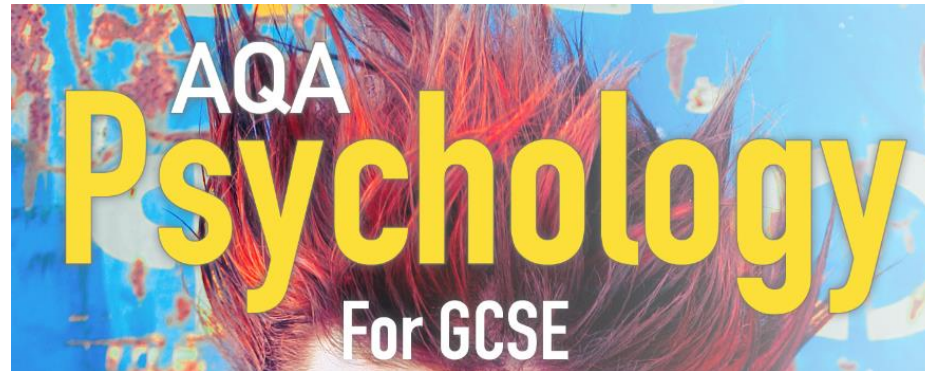
Psychological Problems

- Introduction to mental health
- Depression
- Addiction





Textbook



Username

Password

Log in

Don't have a log in? Order now!

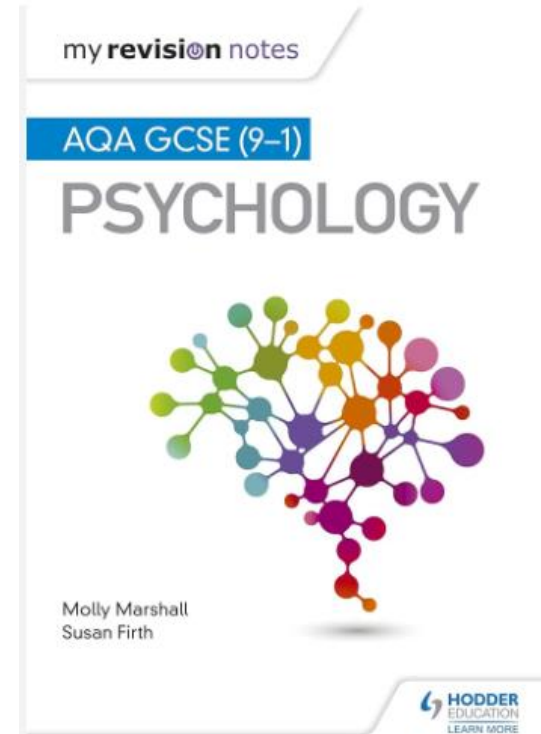
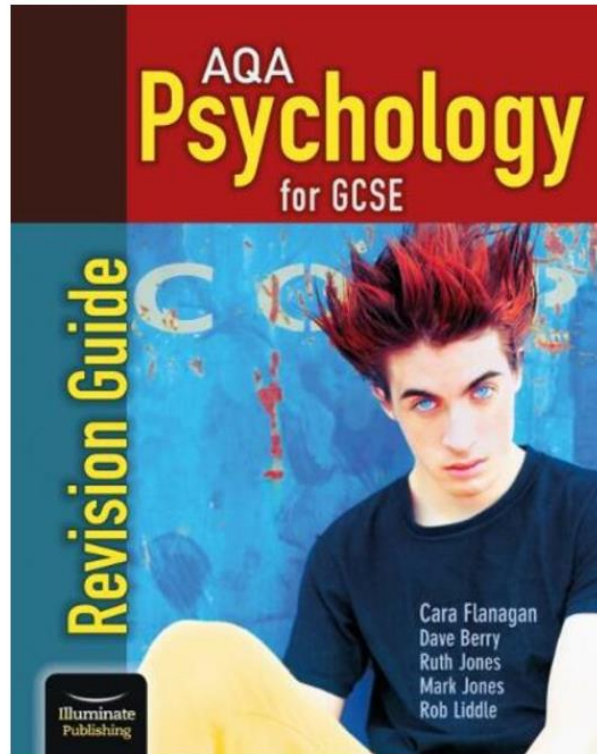
Forgotten your login? Contact us.

By using this website you accept these [terms and conditions](#)

<https://www.illuminate.digital/aqapsychgcse/>

Online
Textbook

Honesty ~ Excellence ~ Ambition ~ Respect ~ Teamwork



Revision
Guides

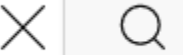
Honesty ~ Excellence ~ Ambition ~ Respect ~ Teamwork

GCSE PSYCHOLOGY

(8182)



psych boost gcse psychology



A YouTube video player thumbnail for a video titled "GCSE Psychology for AQA specification". The thumbnail features a cartoon character with a beard and a thought bubble containing the Eiffel Tower. The text "01 Processes of Memory" is at the top, and "MEMORY GCSE" is written vertically on the right. Below the thumbnail, the video title "GCSE Psychology for AQA specification" is displayed, followed by the channel name "Psych Boost", "23 videos 154,717 views Last updated on 11 Dec 2021", and buttons for "Play all" and "Shuffle".

Honesty ~ Excellence ~ Ambition ~ Respect ~ Teamwork

Homework

- Homework will be set weekly from homework booklets, or will be to create revision resources such as flash cards.
- Students may also be given past exam questions or revision quizzes for homework

Honesty ~ Excellence ~ Ambition ~ Respect ~ Teamwork

Username

Password

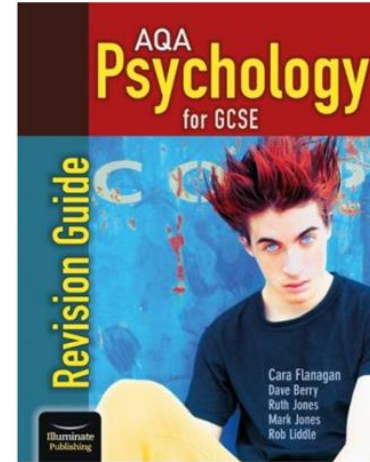
By using this site you accept these [terms and conditions](#)



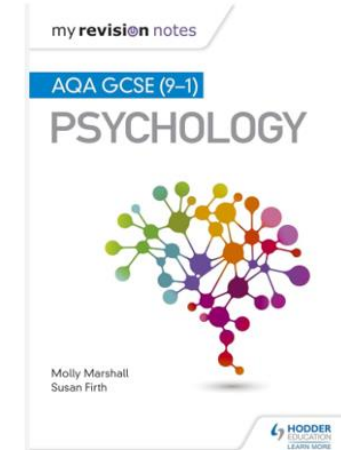
AQA Psychology For GCSE

<https://www.illuminate.digital/aqapsychgcse/>

Online Textbook



Revision Guides



psych boost gcse psychology