



the
LatimerArts
College



How to ACE your Health and Social Care exams!

JDaniels@latimer.org.uk

Ms J. Steels (nee Daniels)
Lead Health and Social Care Teacher

Honesty ~ Excellence ~ Ambition ~ Respect ~ Teamwork

Components

Learners are required to complete and achieve all three components in the qualification.

Pearson BTEC Level 1/Level 2 Tech Award in Health and Social Care				
Component number	Component title	GLH	Level	How assessed
1	Human Lifespan Development	36	1/2	Internal
2	Health and Social Care Services and Values	36	1/2	Internal
3	Health and Wellbeing	48	1/2	External Synoptic

Honesty ~ **Excellence** ~ **Ambition** ~ **Respect** ~ **Teamwork**

COMPONENTS AND AREAS COVERED



Component 1 – Human Lifespan Development

Main Life Stages
Areas of growth and development
PIES

Component 2 – Health and Social care Services and Values

Health Conditions
Barriers to services
Skills and attributes needed to work in the industry

Component 3 – Health and Wellbeing

Physical factors affecting health
Lifestyle factors
Social Factors
Environmental factors

Honesty ~ **Excellence** ~ **Ambition** ~ **Respect** ~ **Teamwork**

COMPONENT 1 & COMPONENT 2

How will I be assessed?

How will I get my mark/grade?

How can I achieve; Level 1 Pass, Level 1 Merit, Level 1 Distinction?

How can I achieve Level 2 Pass, Level 2 Merit, Level 2 Distinction?

PSA

A PSA is a Pearson Set Assessment

Pearson is the exam board

A Set Assessment is how you will be assessed, in other words you will be producing some written assignment work under exam conditions.

This work will be marked by your teacher and there will be an opportunity to have your work back and add to it, give it back to the teacher (called a resubmission)

After all is complete Pearson will check all has been marked fairly.

COMPONENT 1

PSA

You have completed all the content for your Component 1 PSA during year 9.

You have started the first PSA tasks which will be submitted before October half term.

Each PSA task will be marked and you have the opportunity to improve tasks which will be marked and this will be 100% completed by Christmas.



COMPONENT 1 PSA



When sitting your Component 1 PSA you will be allowed to have the your class book, your folder only so it's vital you attend every lesson and make good notes

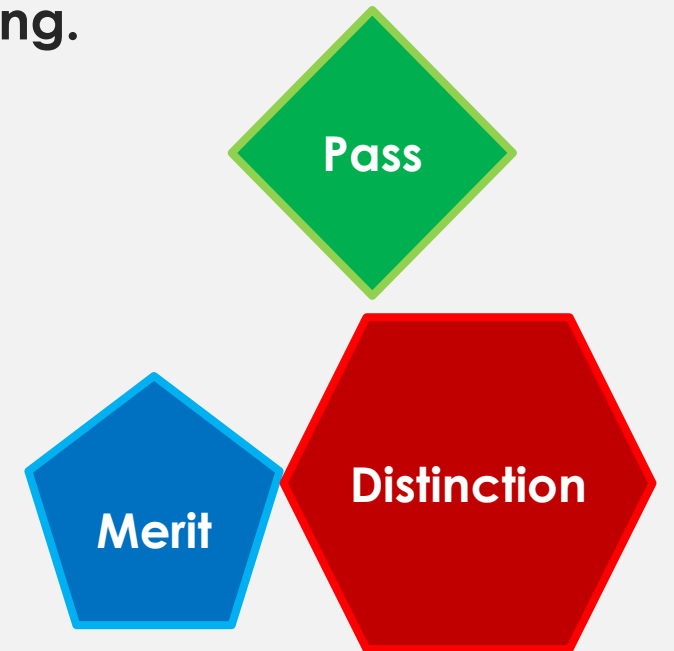
In the PSA you will be working silently with a time limit

COMPONENT 1 IS 3 TASKS

Your Component 1 PSA will take approximately 6 hours and is divided into Tasks which have time allocated for you to carry out your writing.

- ✓ 1.5 hours to complete Task 1 = 12 marks
- ✓ 1.5 hours to complete Task 2 = 12 marks
- ✓ 1 hour to complete Task 3a = 12 marks
- ✓ 2 hours to complete Task 3b. = 24 marks

The total for Component 1 is 60 marks



HOW TO ACHIEVE MARKS IN PSA'S

Marking grid - Component 1

Mark Band 0	Mark Band 1	Mark Band 2	Mark Band 3	Mark Band 4
Task 1: PIES growth and development through the life stages				
Learning outcome A: Understand human growth and development across life stages and the factors that affect it				
0 marks	1 - 3 marks	4 - 6 marks	7 - 9 marks	10 - 12 marks
No rewardable material	<p>Limited knowledge and understanding of an individual's PIES growth and development through the life stages and how the PIES characteristics change from one life stage to the next. Evidenced through:</p> <ul style="list-style-type: none"> • a superficial account of an individual's PIES growth and development through the specified life stages • a superficial account of how the PIES characteristics change from one of the specified life stages to the next. 	<p>Adequate knowledge and understanding of an individual's PIES growth and development through the life stages and how the PIES characteristics change from one life stage to the next. Evidenced through:</p> <ul style="list-style-type: none"> • a partially detailed account of an individual's PIES and development through the specified life stages • a partially detailed account of how the PIES characteristics change from one of the specified life stages to the next. 	<p>Good knowledge and understanding of an individual's PIES growth and development through the life stages and how the PIES characteristics change from one life stage to the next. Evidenced through:</p> <ul style="list-style-type: none"> • a mostly detailed account of an individual's PIES growth and development through the specified life stages • a mostly detailed account of how the PIES characteristics change from one of the specified life stages to the next. 	<p>Comprehensive knowledge and understanding of an individual's PIES growth and development through the life stages and how the PIES characteristics change from one life stage to the next. Evidenced through:</p> <ul style="list-style-type: none"> • a fully detailed account of an individual's PIES growth and development through the specified life stages • a fully detailed account of how the PIES characteristics change from one of the specified life stages to the next.

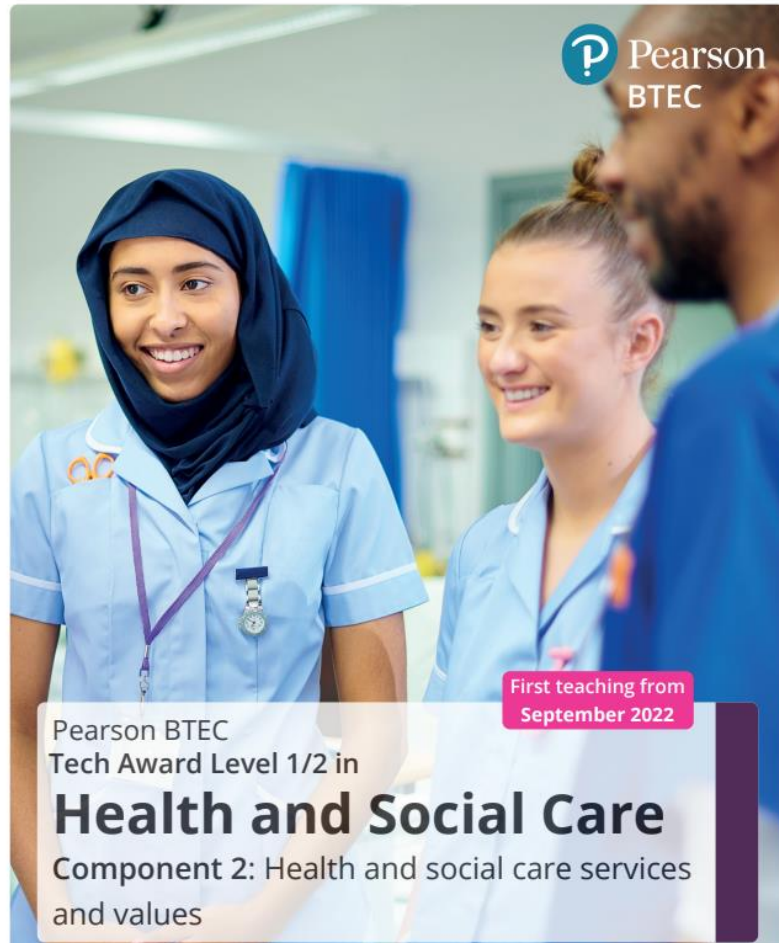
COMPONENT I

30%
..of your final
GCSE grade!

BTEC Tech Award Grading

Level / Qualification Grade	Grade Equivalent
Level 2 / Distinction*	8.5
Level 2 / Distinction	7
Level 2 / Merit	5.5
Level 2 / Pass	4
Level 1 / Distinction	3
Level 1 / Merit	2
Level 1 / Pass	1.25

COMPONENT 2 PSA



You will learn all the content for your Component 2 PSA from Christmas to July in Year 10, when we will finish for the summer.

You will then be able to start the second PSA tasks in September of Year 11 and will 100% finish this again by October Half term when it will be marked as before.

COMPONENT 2 IS 5 TASKS

Your Component 1 PSA will take approximately 6 hours and is divided into Tasks which have time allocated for you to carry out your writing.

- ✓ 1 hours to complete Task 1 = 12 marks
- ✓ 1 hours to complete Task 2 = 12 marks
- ✓ 1 hour to complete Task 3 = 12 marks
- ✓ 1.5 hours to complete Task 4 = 12 marks
- ✓ 1.5 hours to complete Task 5 = 12 marks

The total for Component 2 is 60 marks

30%

**Of your Final
GCSE grade!**

COMPONENTS

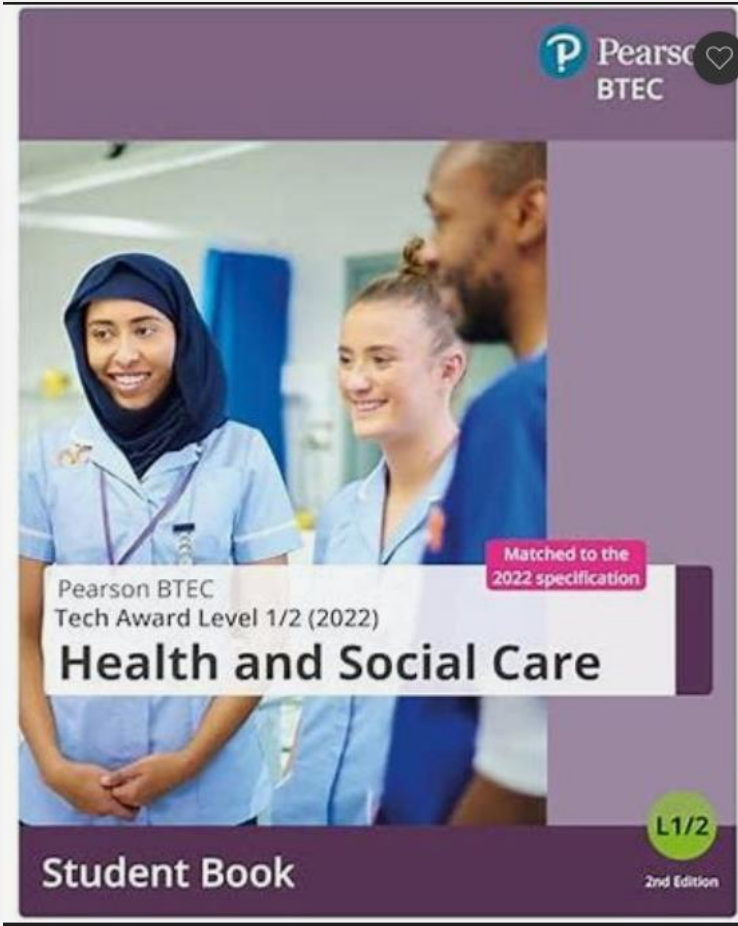
I & 2

60%

**..of the (your)
end Grade!!**

BTEC Tech Award Grading

Level / Qualification Grade	Grade Equivalent
Level 2 / Distinction*	8.5
Level 2 / Distinction	7
Level 2 / Merit	5.5
Level 2 / Pass	4
Level 1 / Distinction	3
Level 1 / Merit	2
Level 1 / Pass	1.25



BTEC Tech Award 2022 Health and Social Care Student Book

Unknown Author

ISBN 10: [1292444622](#) / ISBN 13: [9781292444628](#)

Published by Pearson Education, 2022

Language: English

CONDITION: NEW SOFT COVER

[Save for Later](#)

Sold by **PBShop.store UK**, Fairford, GLOS, United Kingdom

AbeBooks Seller since 11 June 1999

(5-star seller) ★★★★★

[View this seller's items](#)

View all 24 copies of this book

22 New from **£ 32.29**

2 Used from **£ 27.66**

Filter by: [Softcover \(24\)](#)

New - Soft cover

Condition: New

£ 26.56

[Convert Currency](#)

£ 4 shipping from United Kingdom to Ireland

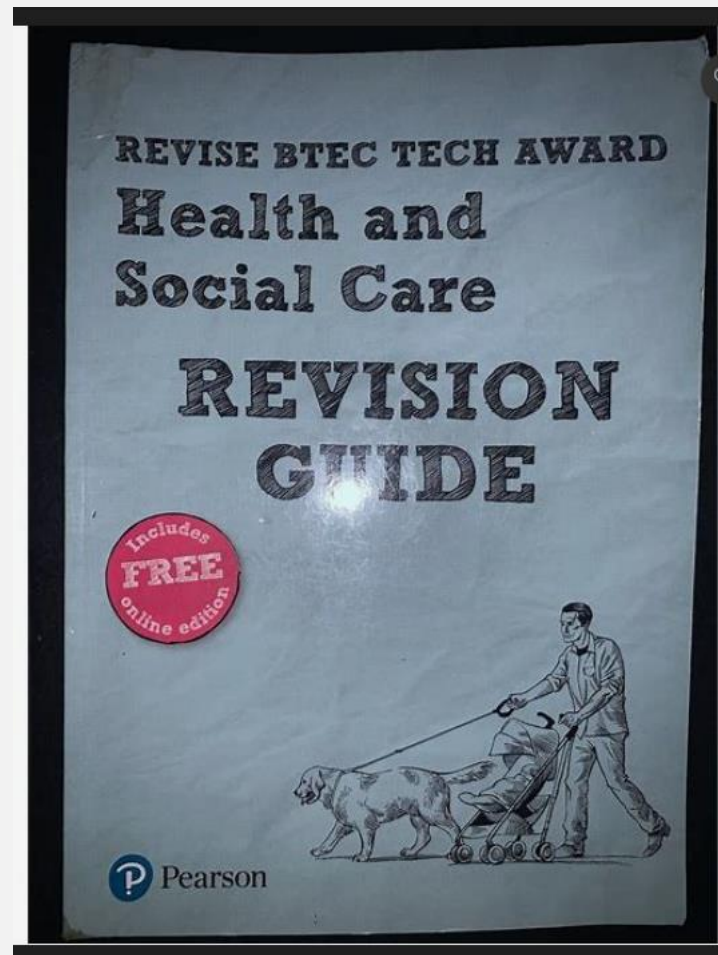
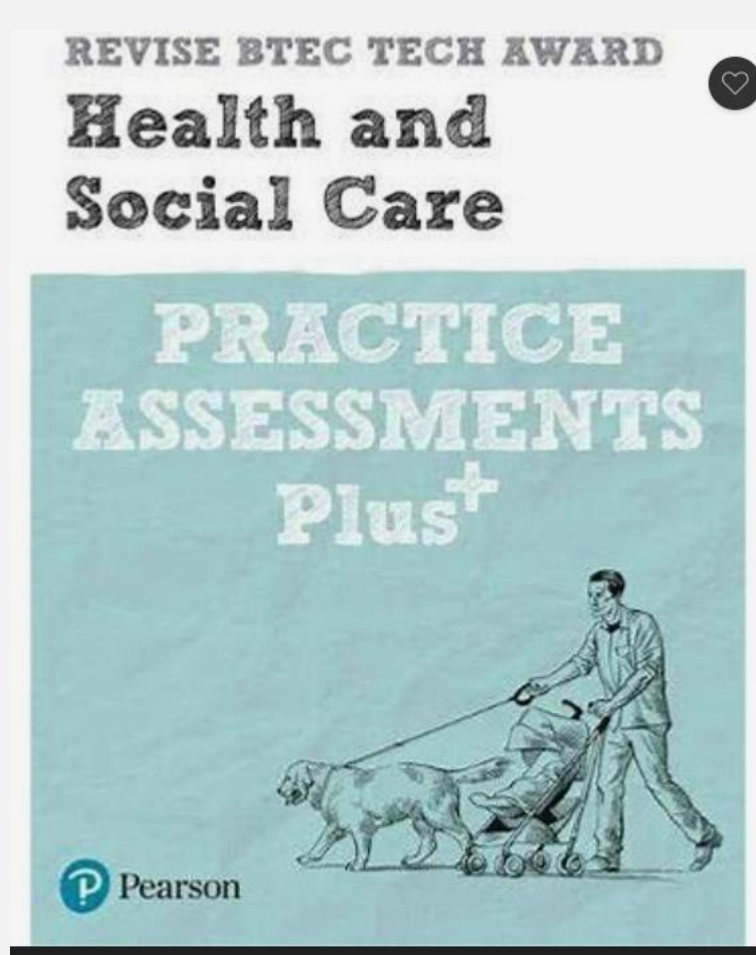
[Destination, rates & speeds](#)

Quantity: 15 available

[Add to basket](#)

Textbook

Honesty ~ **Excellence** ~ **Ambition** ~ **Respect** ~ **Teamwork**



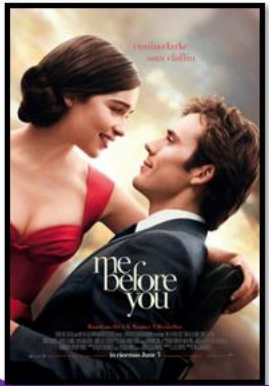
Revision
Guides

Honesty ~ **Excellence** ~ **Ambition** ~ **Respect** ~ **Teamwork**



My Sister's Keeper

Conceived as a marrow donor for her gravely ill sister, Anna Fitzgerald has undergone countless surgeries and medical procedures in her short life. Though their older daughter's life has no doubt been prolonged, the unorthodox decision of Anna's parents has cracked the entire family's foundation. When Anna sues her parents for emancipation, it sets off a court case that threatens to destroy the family for good.



Me Before You

Young and quirky Louisa "Lou" moves from one job to the next to help her family make ends meet. Her cheerful attitude is put to the test when she becomes a caregiver for Will Traynor (Sam Claflin), a wealthy young banker left paralyzed from an accident two years earlier. Will's cynical outlook starts to change when Louisa shows him that life is worth living. As their bond deepens, their lives and hearts change in ways neither one could have imagined.



Jesy Nelson- Odd One Out [BBC]

Little Mix star Jesy Nelson goes on a journey of rehabilitation as she opens up about abuse she has suffered at the hands of cyberbullies and its effects on her mental health. To help her heal, she meets other victims of cyber abuse, sharing devastating stories of online trolling.



Babies: Their wonderful world [BBC]

The series brings together over 200 babies and scientists from around the world to take part in one of the most ambitious scientific studies about babies ever attempted. With cutting-edge experiments, the show explores how the incredible changes that happen in the first two years of life make us who we are.

NHS England
@NHSEngland



Setting priorities and direction, and encouraging and informing national debate, to improve health and care.

Academy Of Fab Stuff
@FabNHSStuff



The voice for the nursing community and the leading source of nursing news and best practice in the United Kingdom.

Nursing times
@NursingTimes



The voice for the nursing community and the leading source of nursing news and best practice in the United Kingdom.

South Yorkshire Bassetlaw Integrated Care System
@SYBhealthcare



Our NHS and Local Authority partnership

Dame Jessica Ennis-Hill
@JessicaEnnisHill



Follow Dame Jessica Ennis-Hill as the Olympian returns to training after her two pregnancies.

Lucy Mountain
@thefashionfitnessfoodie



Lucy is a wellness advocate whose career is centered on putting a stop to the scams and "quick fixes" by providing real truth and encouraging a balanced, forgiving, health conscious approach to wellness.

Dr Rupy Auila
@doctors_kitchen



GP on a mission to spread the word about the impact of diet and lifestyle on our overall health

Dr Anita Mitra
@gynaegeek



Offers up evidence-backed advice on vaginal health, fertility and cervical cancer prevention.